

## FA279 Graphiques et Cie

Associe chaque équation à la représentation graphique qui convient, puis à son ensemble de solutions.

## Equations

a)  $3x + 3 = 24 - x$

d)  $\frac{x}{4} = 2x + 7$

b)  $x^2 = x + 2$

e)  $x + 3 = x - 1$

c)  $\frac{1}{x} = 4x$

f)  $\frac{x^3}{2} = 2x$

## Ensembles de solutions

$S_1 = \{-0,5 ; 0,5\}$

$S_4 = \{-2 ; 0 ; 2\}$

$S_2 = \emptyset$

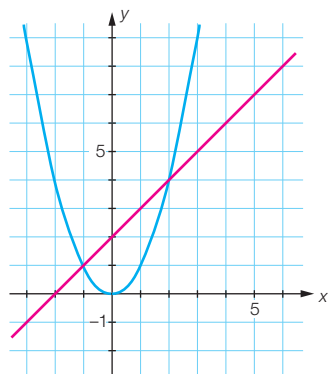
$S_5 = \{-1 ; 2\}$

$S_3 = \{5,25\}$

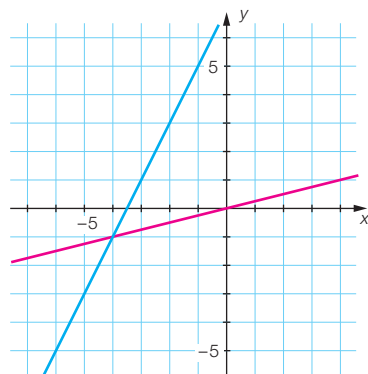
$S_6 = \{-4\}$

## Représentations graphiques

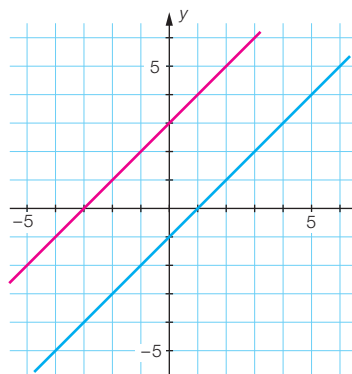
A



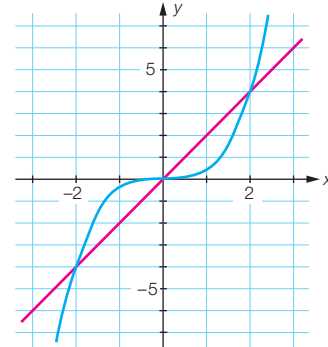
B



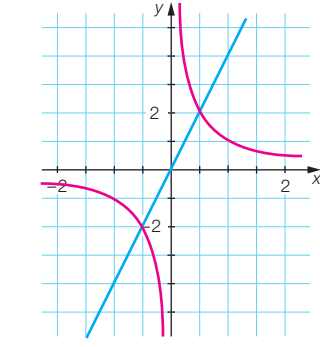
C



D



E



F

